

# Moxie Pond

## Bald Mountain Township, ME



### Protecting 1,845 acres along the Appalachian Trail in Maine

Winding through the Appalachian Mountains along the East Coast, the Appalachian Trail traverses 14 states from Maine’s wild granite fortress, Mount Katahdin, to the misty waterfalls in Amicalola Falls State Park in Georgia. Trust for Public Land has identified over 26,000 acres that must be protected to maintain and enhance the Appalachian Trail experience for the millions of hikers, campers, and visitors who enjoy the trail each year. We can preserve these lands and secure an American treasure for generations to come, meaning more miles to hike, more nature to experience, and more memories to be made.

Most recently in Maine, we completed the Bald Mountain Pond project, successfully conserving 2,620 acres surrounding its rugged shoreline, and an iconic stretch of the Appalachian Trail, ensuring it was protected from development and open to the public forever. Now, we turn our attention to the adjacent 1,845-acre Moxie Pond, a project over 10 years in the making. A prominent, undeveloped parcel in the Caratunk-Bald Mountain Pond priority focus area, this project will protect five miles of viewshed and soundscape of the Appalachian Trail from additional timber harvest and the threat of development along the Moxie Pond shoreline.

Moxie Pond is a missing puzzle piece in over 20,000 acres of contiguous, highly climate-resilient land and features sweeping views, concentrations of rare natural communities and wildlife habitat, and remarkable all-season recreation opportunities for locals, thru-hikers, and visitors to Western Maine’s High Peaks.

### COST, SIZE, TIMING

\$2,637,000 project cost  
1,845 acres  
September 2026 projected completion

### FUTURE STEWARD

National Park Service’s Appalachian Scenic Trail Unit

### FUNDING PLAN

#### Secured/Pledged/Pending

\$2,561,000

#### Remaining Need

\$76,000

### COMMUNITY VALUES

5+ miles of Appalachian Trail Corridor protected; lake access; important snowmobile trail corridor protected

### NATURAL VALUES

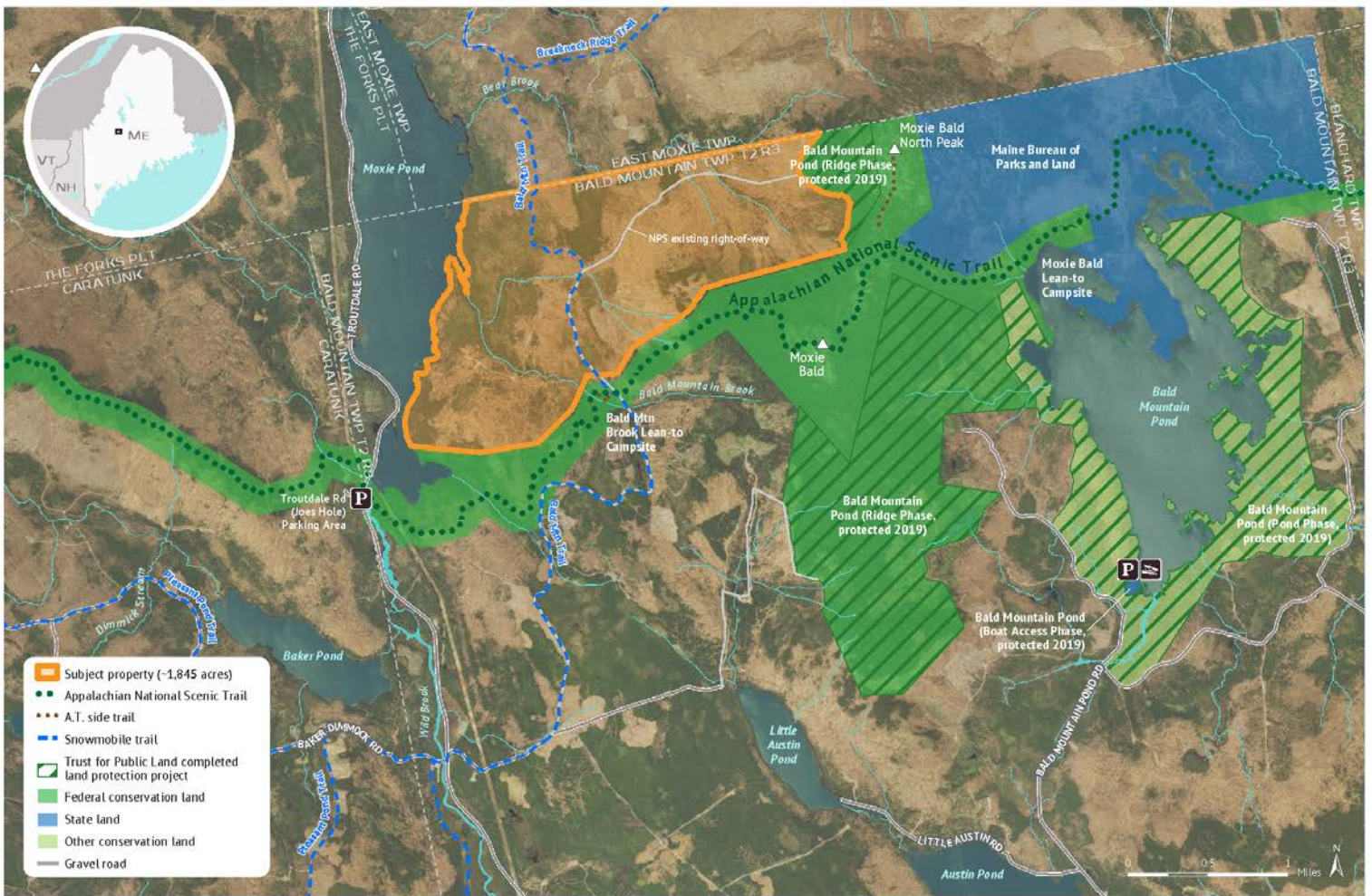
1 mile lakeshore habitat protected, buffers areas with high concentrations of rare natural communities, conserves streams and high elevation areas, forest health improvements

### PARTNERS

National Park Service (future landowner). Supported by Maine Appalachian Trail Club, Appalachian Trail Conservancy, Maine Appalachian Trail Land Trust

### STATE & REGIONAL SIGNIFICANCE

Appalachian Trail protection



## Connecting Maine communities and beyond to the outdoors and each other

There are opportunities across Moxie Pond for locals and visitors to connect with the outdoors. The Bald Mountain Brook lean-to, an Appalachian Trail shelter, is just to the south of the property as well as several camps on the western side of Joe's Hole and Moxie Pond where Troutdale Road provides access from the south. Side trails provide additional opportunities to explore the land: the Moxie Bald cutoff trail and the North Peak side trail from the Appalachian Trail.

The property includes a large network of regional connector trails including a prominent trail for ATVs and snowmobiles. This trail follows Bald Mountain Trail, a logging road which runs through the property. This segment will be protected through a recreational trail easement granted to the State of Maine. The property is also used for fishing due to the

presence of seasonal homes across the lake, good road access, and a popular cold-water fishery that includes eastern brook trout and landlocked salmon.

## Join us to protect Moxie Pond

Once protected, the property will be owned by the National Park Service's Appalachian Scenic Trail Unit. The Maine Appalachian Trail Conservancy will ensure that the land is managed according to NPS best practices to ensure that this iconic landscape continues to thrive for generations to come.

With your help, we can protect Moxie Pond. We are currently raising \$2.6 million to ensure the success of this project. Please contact us if you have interest in learning more about our efforts to protect this property for the thousands of annual visitors who find joy and adventure on the Appalachian Trail, Moxie Pond, and the surrounding forest.

### FOR MORE INFORMATION OR TO MAKE A GIFT:

Lynnette Batt Project Manager New England 207.670.4425 <a href="mailto:lynnette.batt@tpl.org">lynnette.batt@tpl.org</a>	Ally McDougal Director of Philanthropy New England 781.856.5564 <a href="mailto:ally.mcdougal@tpl.org">ally.mcdougal@tpl.org</a>
---	--



The Trust for Public Land (TPL) is a national nonprofit that works to connect everyone to the benefits and joys of the outdoors.