

# NASHUA RIVER WATERSHED

## Squannacook and Nissitissit Sub-Basins

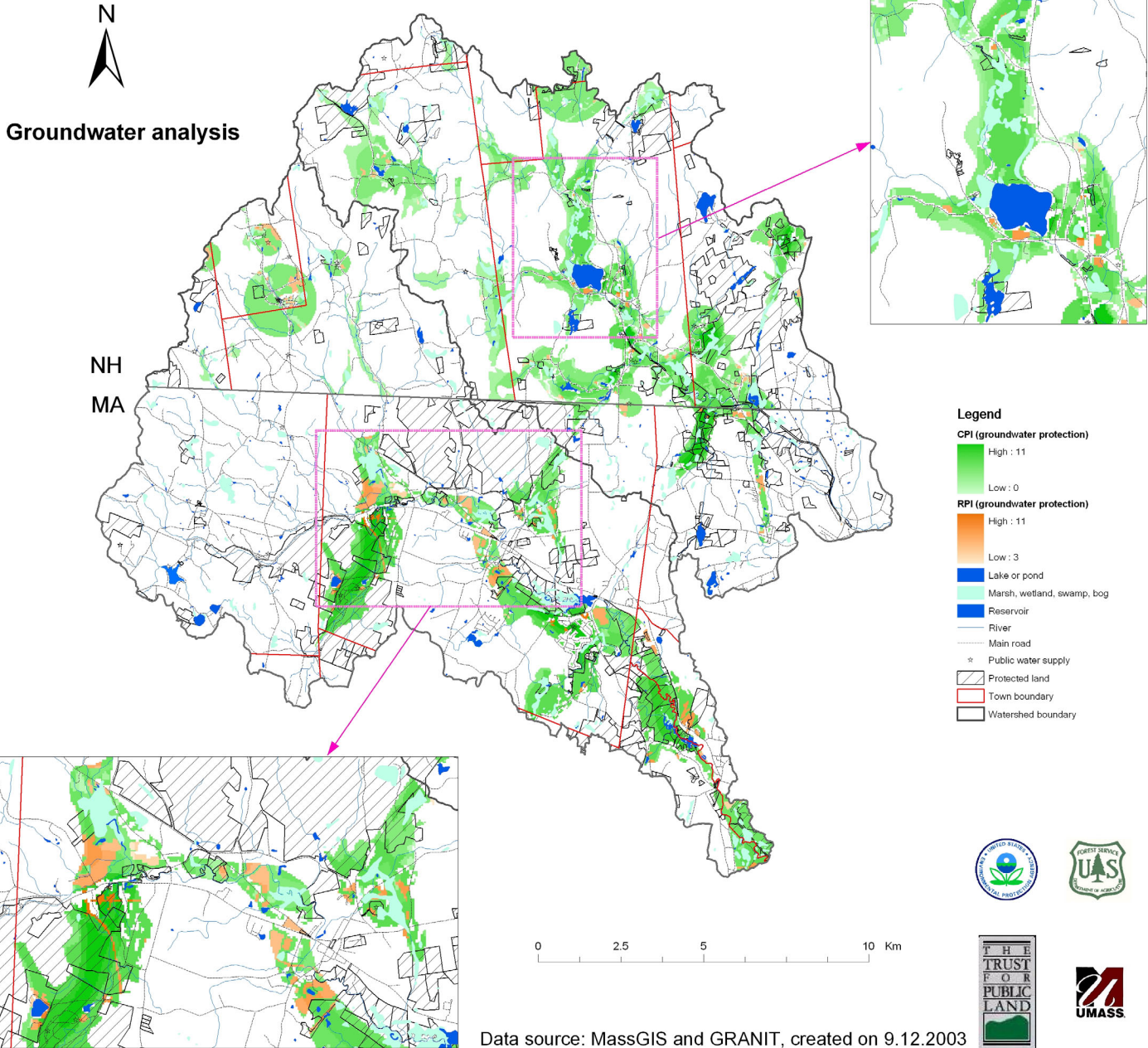


Figure 3 – Groundwater Conservation, Restoration, and Stormwater Management Priority Indices for the Squannacook and Nissitissit River watersheds, Massachusetts and New Hampshire. The enlarged areas are centered on (left) Townsend, MA and (right) Brookline, NH. Conservation Priority level was based on whether forested or wetland, type of soil, transmissivity and whether there is a public water supply. This map includes all Community Water Systems with more than 25 users, with Zone I and Zone II source protection areas in green.

# NASHUA RIVER WATERSHED

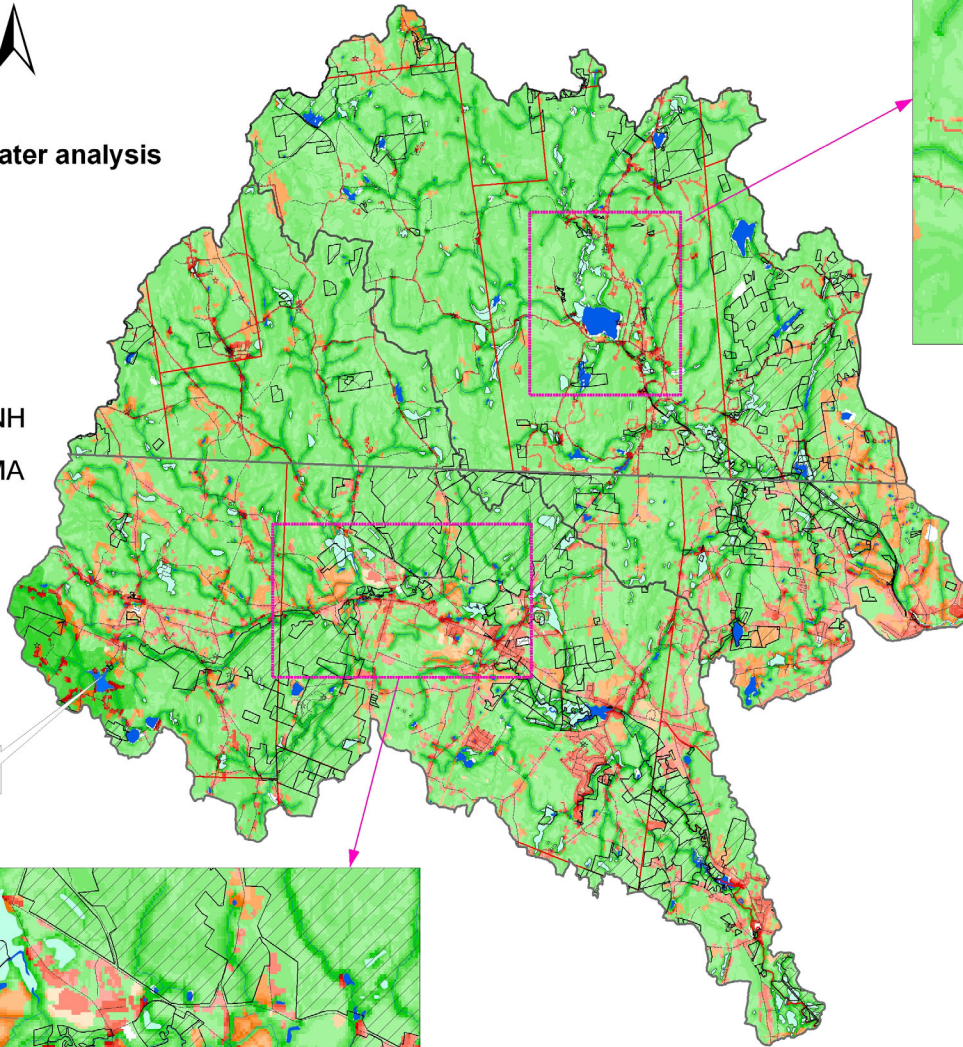
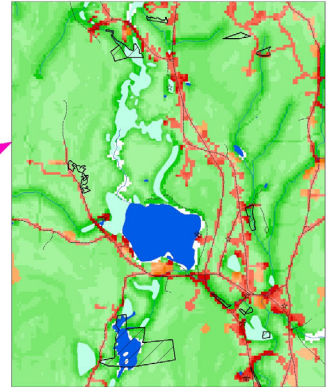
## Squannacook and Nissitissit Sub-Basins



Surface water analysis

NH  
MA

Wyman Pond  
(Ashby)



### Legend

CPI (surface water protection)



RPI (Surface water protection)

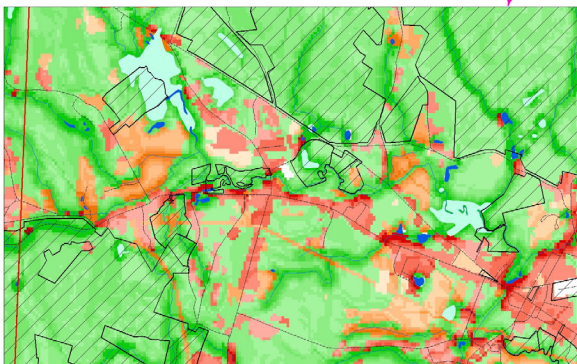


SMPI (surface water protection)



\* Public water supply

- Protected land
- Lake or pond
- Marsh, wetland, swamp, bog
- Reservoir
- River
- Main road
- Town boundary
- Watershed boundary



0 2.5 5 10 Km



Data source: MassGIS and GRANIT, created on 9.12.2003

Figure 1 – Surface Water Conservation, Restoration, and Stormwater Management Priority Indices for the Squannacook and Nissitissit River watersheds, Massachusetts and New Hampshire. The combined area of the watersheds is 340.9 km<sup>2</sup> (84,200 acres) of which 81% is forest, wetlands, or water, 13% is developed or cleared, and 6% is agriculture (row crops, hay, nurseries, and orchards). The enlarged areas are centered on (left) Townsend, MA and (right) Brookline, NH and highlight areas where focused efforts could contribute significantly to the protection or improvement of water resources. Data sources: MassGIS, NH GRANIT, US Geological Survey, and the Natural Resources Conservation Service.



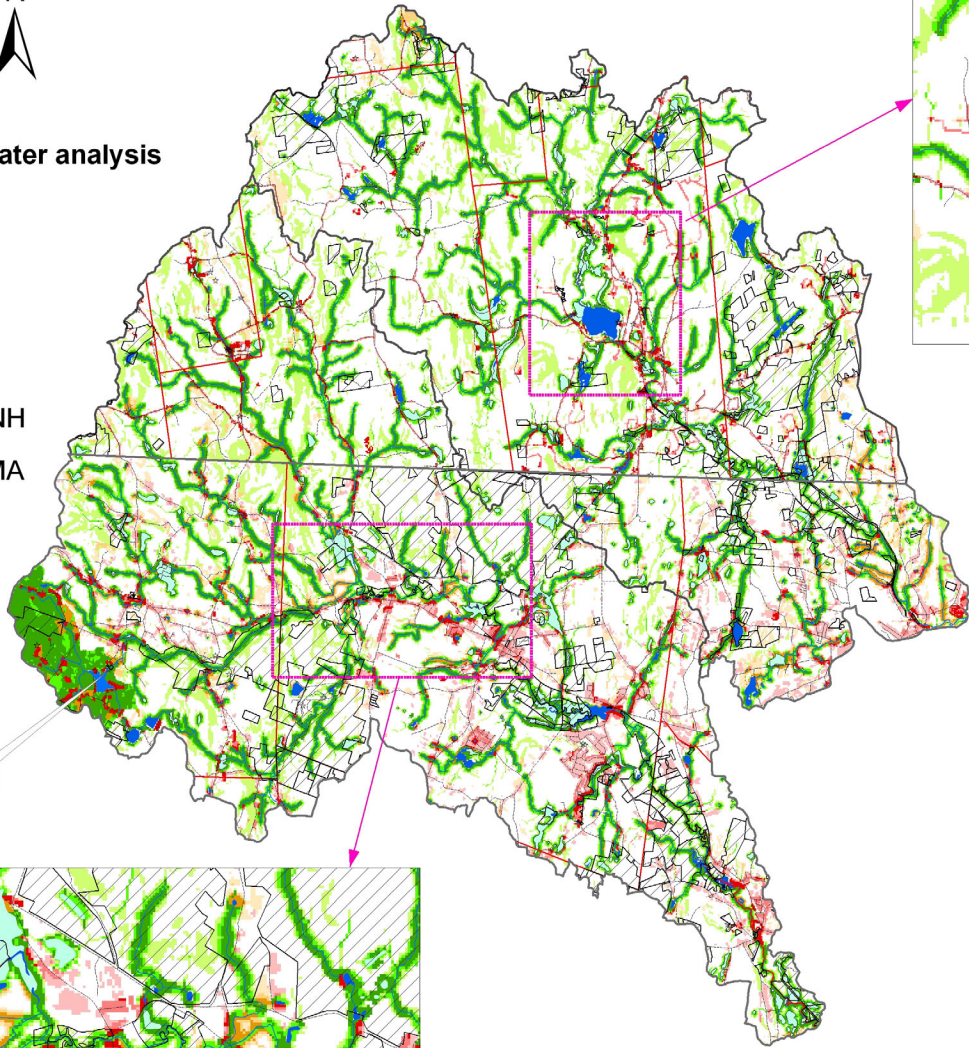
# NASHUA RIVER WATERSHED Squannacook and Nissitissit Sub-Basins



Surface water analysis

NH  
MA

Wyman Pond  
(Ashby)



**Legend**

- 90th percentile CPI
- 80-90th percentile CPI
- 70-80th percentile CPI
- 90th percentile RPI
- 80-90th percentile RPI
- 70-80th percentile RPI
- 90th percentile SMPI
- 80-90th percentile SMPI
- 70-80th percentile SMPI
- ★ Public water supply
- Protected land
- Lake or pond
- Marsh, wetland, swamp, bog
- Reservoir
- River
- Main road
- Town boundary
- Watershed boundary



0 2.5 5 10 Km

Data source: MassGIS and GRANIT, created on 9.12.2003

Figure 2 – Surface Water Conservation, Restoration, and Stormwater Management Priority Indices in the 70th, 80th, and 90th percentiles for the Squannacook and Nissitissit River watersheds, Massachusetts and New Hampshire. These are "A", "B", and "C" areas for source water protection and watershed management efforts. The enlarged areas are centered on (left) Townsend, MA and (right) Brookline, NH. The Wyman Pond watershed in the southwest corner is the water supply for Ashby, MA.