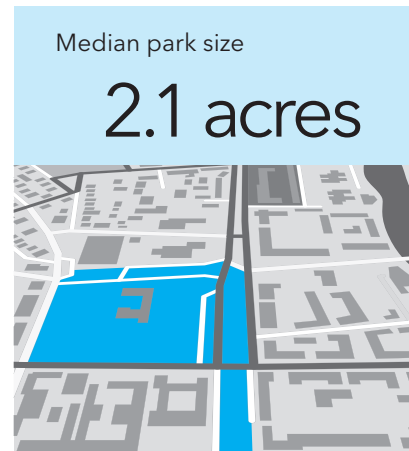
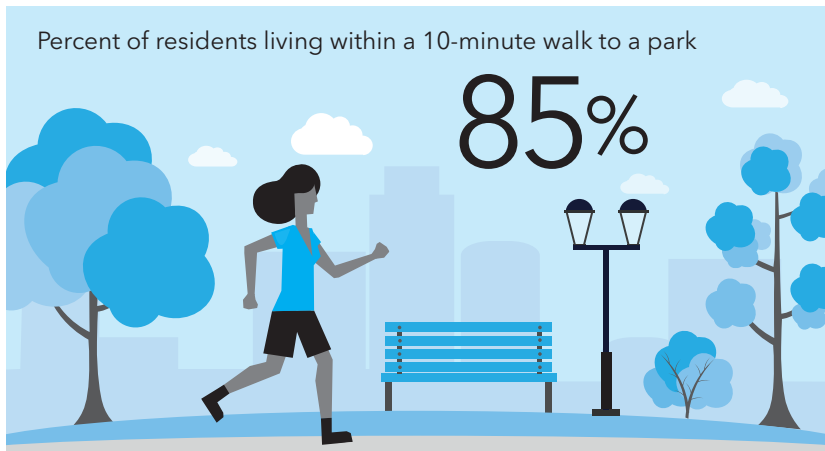


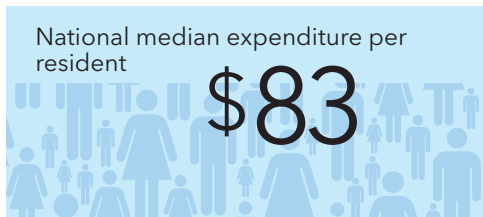
# Oakland, CA



CITY CHARACTERISTICS					
Population	Daytime population change	Land area (acres)	Parkland as percent of adjusted city area	Density (people per acre)	Growth since 2010
424,072	-5.8%	35,703	11.6%	12.8	8.5%



SPENDING		
	Overall spending	Per resident
Public	\$6,343,947	\$15
Private	\$1,722,651	\$4
Total	\$8,066,598	\$19



PARK ACREAGE MANAGEMENT		
	Acres	Per 1,000 people
Oakland Office of Parks and Recreation	1,940	
East Bay Regional Park District (within Oakland)	1,664	
Port of Oakland	261	
Total	3,865	9.1

**PARK FACT**

Joaquin Miller Park is famous for its stands of redwood trees. The 500-acre park is home to what is considered to be one of the few redwood forest to flourish in an urban setting. Most notably, native Coast Redwoods (*sequoia sempervirens*) grow throughout the park. Many of these trees are in the second or third growth following major logging in the late 1800s and early 1900s. These trees were used to build the cities of Oakland and San Francisco.

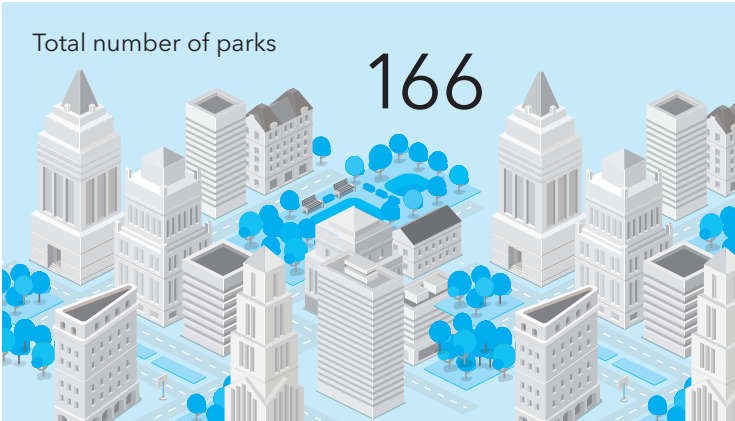
# Oakland, CA CONTINUED

**PARTNERSHIPS**

Multiple partners support parks and recreation in Oakland, such as the Friends of Joaquin Miller Park and the Oakland Parks and Recreation Foundation. In addition, volunteers gave 147,940 hours of their time to the city's parks in the past year.

**PARK AMENITIES**

	Total
Acres of fields	N.A.
Basketball hoops	109
Community garden plots	170
Dog parks	16
Miles of trails	76
Playgrounds	75
Recreation/senior centers	26
Splashpads/spraygrounds	2



Flicker: CRAIG HOWELL



Oakland sits between a swath of regional parkland and the San Francisco Bay.

Information sourced from the US Census Bureau, ESRI's 2017 Demographic Forecasts, and The Trust for Public Land's annual survey of all public and non-profit park agencies and groups in the 100 largest US cities. More information is online at [tpl.org/cityparkfacts](http://tpl.org/cityparkfacts).