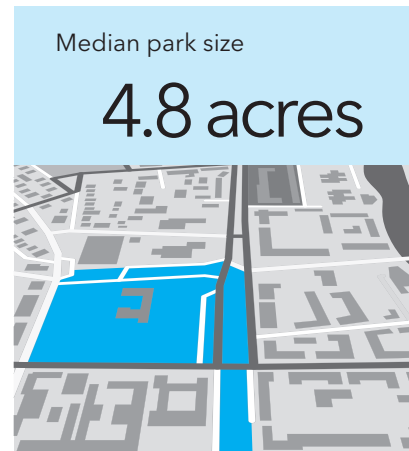
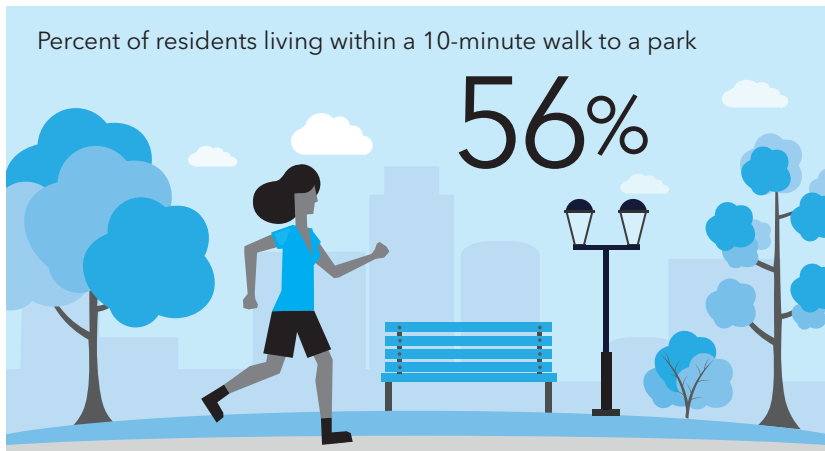


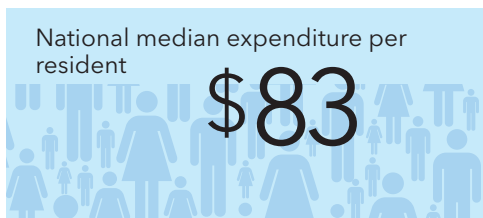
Los Angeles, CA



CITY CHARACTERISTICS					
Population	Daytime population change	Land area (acres)	Parkland as percent of adjusted city area	Density (people per acre)	Growth since 2010
3,986,442	-0.5%	299,949	12.5%	13.5	5.1%



SPENDING		
	Overall spending	Per resident
Public	\$385,597,733	\$97
Private	\$11,835,355	\$3
Total	\$397,433,088	\$100



PARK FACT

Perhaps the most famous aspect of Los Angeles' park system is Griffith Park, featuring 4,210 acres of land and offering museums, a zoo, a theatre, and other attractions as well as urban wilderness.

PARK ACREAGE MANAGEMENT		
	Acres	Per 1,000 people
Los Angeles Department of Recreation and Parks	15,766	
California Department of Parks and Recreation (within Los Angeles)	10,465	
Mountains Recreation and Conservation Authority (within Los Angeles)	5,960	
U.S. Forest Service (within Los Angeles)	3,696	
Los Angeles County Department of Parks and Recreation (within Los Angeles)	659	
Los Angeles Department of Water and Power (within Los Angeles)	288	
Port of Los Angeles	187	
Total	37,021	9.3

Los Angeles, CA CONTINUED

PARTNERSHIPS

Los Angeles has very strong civic support for its park system. Groups like the Los Angeles Neighborhood Land Trust support the parks city-wide, while others are focused on individual parks. Volunteers gave more than 5 million hours of their time to the city's parks over the past year.

PARK AMENITIES

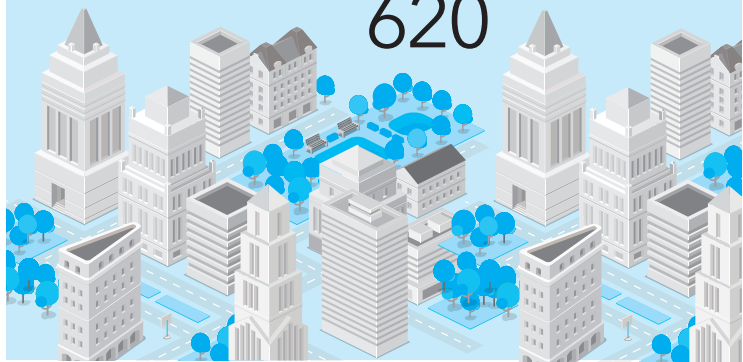
	Total
Acres of fields	1,029
Basketball hoops	815
Community garden plots	1,741
Dog parks	11
Miles of trails	173
Playgrounds	437
Recreation/senior centers	222
Splashpads/spraygrounds	16

Oldest park
Pershing Square, 1866



Total number of parks

620



ELISE LEVINGER



A mother and daughter walk together at Runyon Canyon.