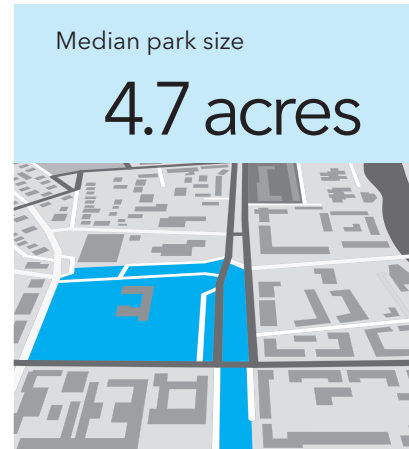
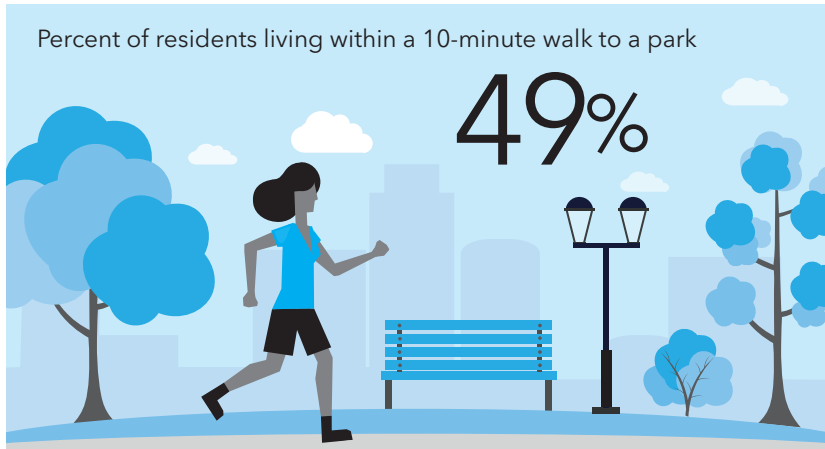


Houston, TX



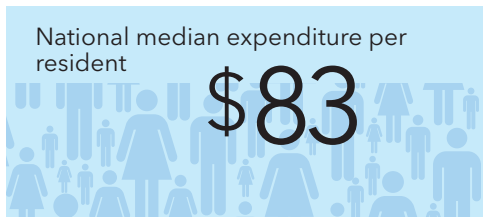
CITY CHARACTERISTICS

Population	Daytime population change	Land area (acres)	Parkland as percent of adjusted city area	Density (people per acre)	Growth since 2010
2,333,285	29.9%	383,737	18.1%	6.3	11.1%



SPENDING

	Overall spending	Per resident
Public	\$82,532,245	\$35
Private	\$21,821,064	\$9
Total	\$104,353,309	\$44



PARK ACREAGE MANAGEMENT

	Acres	Per 1,000 people
Houston Parks and Recreation Department	47,158	
Harris County Parks (within Houston)	14,565	
Texas Parks and Wildlife Department (within Houston)	2,883	
Fort Bend County Parks and Recreation Department (within Houston)	2,023	
Discovery Green Conservancy (within Houston)	12	
Total	66,641	28.6

PARK FACT

Everything really is bigger in Texas, and Houston claims some of these titles. The city is home to the largest skatepark in North America, Spring Skatepark, as well as to Cullen Park which is among the largest urban parks in the US. Houston also has an impressive system of trails along the bayous. Continued expansion is planned for these trails even among the clean-up and rebuild efforts following the devastating effects of Hurricane Harvey.

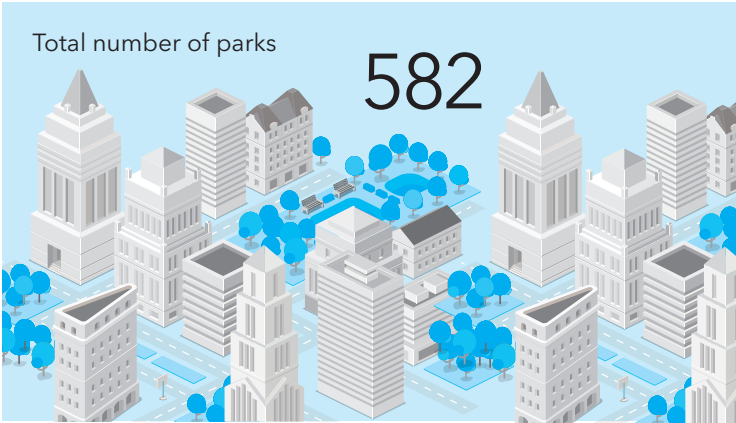
Houston, TX CONTINUED

PARTNERSHIPS

Houston's parks have a number of partners supporting them within the city, including city-wide partner the Houston Parks Board as well as groups that are dedicated to one park. In the past year, volunteers gave a combined 132,574 hours to their parks.

PARK AMENITIES

	Total
Acres of fields	462
Basketball hoops	515
Community garden plots	100
Dog parks	16
Miles of trails	46
Playgrounds	403
Recreation/senior centers	76
Splashpads/spraygrounds	35



Buffalo Bayou Park connects people to the water at the heart of Houston.

Information sourced from the US Census Bureau, ESRI's 2017 Demographic Forecasts, and The Trust for Public Land's annual survey of all public and non-profit park agencies and groups in the 100 largest US cities. More information is online at tpl.org/cityparkfacts.

ALL IMAGE