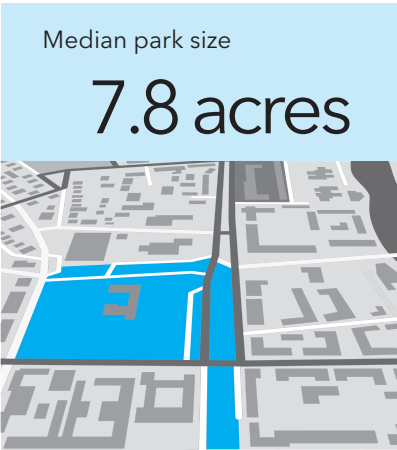
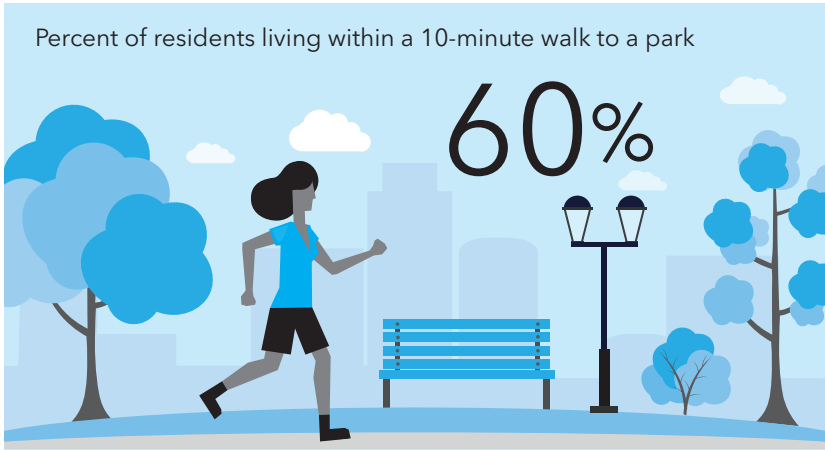


Dallas, TX



CITY CHARACTERISTICS

Population	Daytime population change	Land area (acres)	Parkland as percent of adjusted city area	Density (people per acre)	Growth since 2010
1,323,651	19.1%	217,932	12.5%	6.1	10.5%

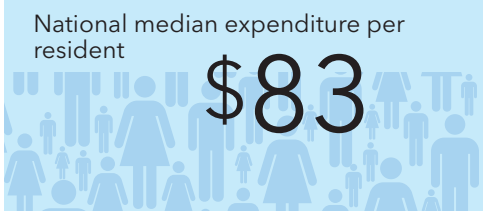


SPENDING

	Overall spending	Per resident
Public	\$ 154,595,224	\$117
Private	\$7,837,832	\$6
Total	\$162,433,056	\$123

PARK ACREAGE MANAGEMENT

	Acres	Per 1,000 people
Dallas Park and Recreation Department	23,147	
Trinity Watershed Management Division	3,891	
Total	27,038	20.4



PARK FACT

From the expansive Trinity River Greenbelt to pocket parks and downtown plazas, Dallas has impressive variety in its park system. Among these is Klyde Warren Park, which forms a cap over Woodall Rogers Freeway and creates a pedestrian connection between downtown Dallas and the rest of the city. The park is a feat of engineering that is part of a larger national trend toward reconnecting spliced cities and creating greenspace in unique places.

Dallas, TX CONTINUED

PARTNERSHIPS

Over the past year, park lovers in Dallas volunteered more than 300,000 hours of their time to the Dallas Parks and Recreation Department alone. Beyond this, the city has a vibrant community of advocacy and philanthropic support behind their parks.

PARK AMENITIES

	Total
Acres of fields	115
Basketball hoops	326
Community garden plots	N.A.
Dog parks	4
Miles of trails	N.A.
Playgrounds	200
Recreation/senior centers	43
Splashpads/spraygrounds	11

Oldest park

City Park, 1876



Total number of parks

388



FICKR: DANIEL LOBO



Arches span the walkways in Klyde Warren Park.