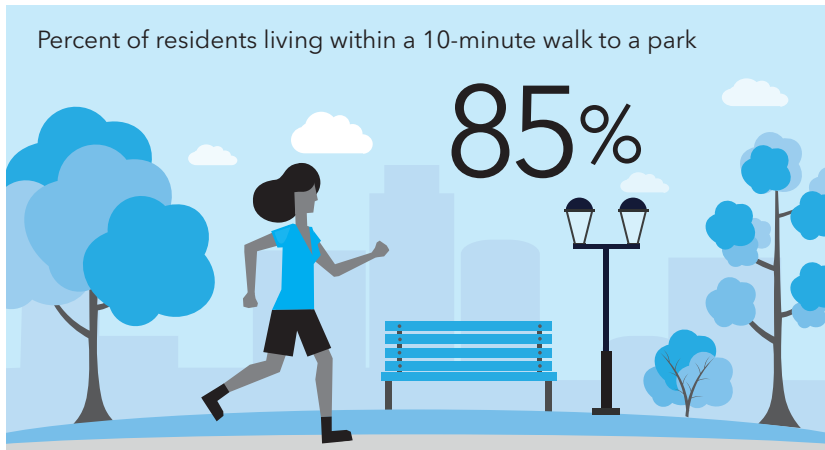


Buffalo, NY



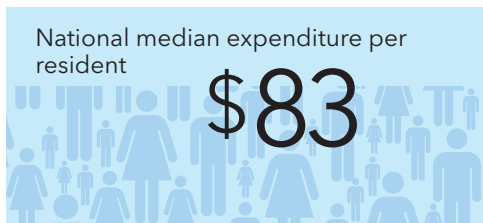
CITY CHARACTERISTICS

Population	Daytime population change	Land area (acres)	Parkland as percent of adjusted city area	Density (people per acre)	Growth since 2010
260,428	20.9%	25,846	7.6%	10.3	-0.3%



SPENDING

	Overall spending	Per resident
Public	\$14,024,099	\$54
Private	\$3,888,601	\$15
Total	\$17,912,700	\$69



PARK ACREAGE MANAGEMENT

	Acres	Per 1,000 people
Buffalo Division of Parks and Recreation	1,842	
Erie County Department of Parks, Recreation and Forestry (within Buffalo)	70	
National Park Service (within Buffalo)	1	
Total	1,913	7.0

PARK FACT

The City of Buffalo is made up of a system of parks, parkways, and manicured circles and avenues known as the Buffalo Olmsted Park System. Designed by Frederick Law Olmsted it includes the city's oldest park, Delaware Park, as well as five other large parks and many smaller landscaped greenspaces. This network of parks and greenspaces is on the National Register of Historic Places and dates among the earliest of such planning efforts in the US.

Buffalo, NY CONTINUED

PARTNERSHIPS

The Buffalo Olmsted Parks Conservancy maintains and operates the city's Olmsted park system. In addition, volunteers dedicated more than 25,000 hours to the Buffalo Department of Parks and Recreation in the past year.

PARK AMENITIES

	Total
Acres of fields	N.A.
Basketball hoops	165
Community garden plots	N.A.
Dog parks	2
Miles of trails	N.A.
Playgrounds	61
Recreation/senior centers	9
Splashpads/spraygrounds	11

Oldest park

Delaware Park, 1878



Total number of parks

208



CHARLIE MCCABE



Lincoln Parkway Bridge in Delaware Park, part of the Buffalo Olmsted park system.